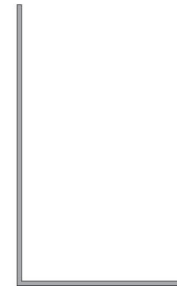
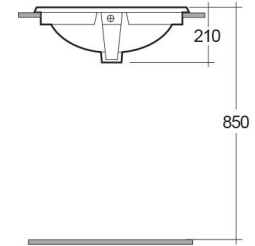
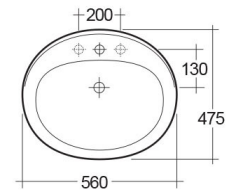


RAK-MIRA
Wash basin | Drop In

RAK
CERAMICS



TECHNICAL SPECIFICATIONS

Type:	Drop In
Dimensions:	560 x 475 mm
Weight:	11 Kg
Color:	Alpine White
Shape of basin:	Oval
Overflow hole:	yes

Code	Name
OC67AWHA	MIRA WASH BASIN 56CM

Dimensions: All dimensions in mm. Tolerance of vitreous china & fireclay items: $\pm 5\%$ for below 200mm and $\pm 3\%$ for above 200mm; for all other items tolerance $\pm 1\%$. Note: Due to a continuing development program to improve design and performance, the manufacturer reserves all rights to vary specifications without prior information. Please note accessories are for photographic use only.