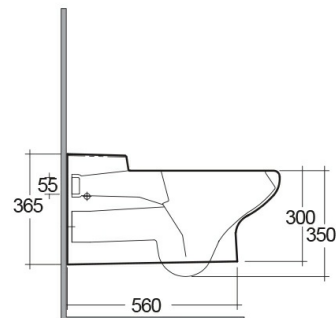
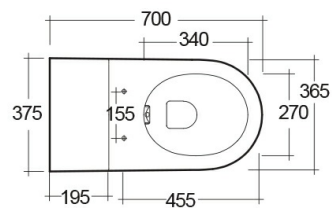


RAK-SPECIAL NEEDS

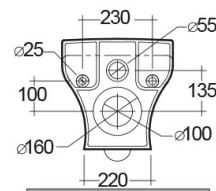
Wandhängend | Wasserklosett

RAK
CERAMICS



Technische Spezifikationen

Größe:	700 x 365 mm
Gewicht:	30 Kg
Farbe:	alpinweiß
Siphon-Typ:	P-Falle
Wasserabscheider Typ:	Verdeckt
Seat cover options:	Harnstoff
Bowl shape:	Oval
Soft-close:	ja
Dual-Flush:	ja
Kollektion:	RAK-SPECIAL NEEDS



Code	Name
COWC00007	COMPACT WATER CLOSET RIMLESS WALL HUNG 70CM

Dimensions: All dimensions in mm. Tolerance of vitreous china & fireclay items: $\pm 5\%$ for below 200mm and $\pm 3\%$ for above 200mm; for all other items tolerance $\pm 1\%$. Note: Due to a continuing development program to improve design and performance, the manufacturer reserves all rights to vary specifications without prior information. Please note accessories are for photographic use only.