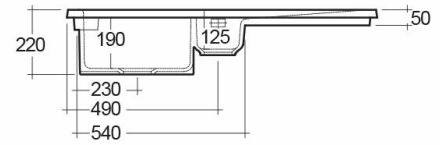
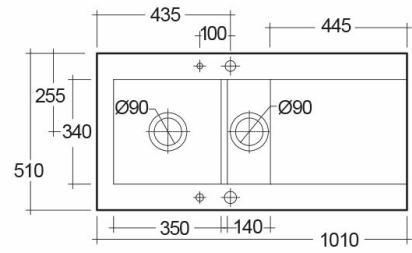


RAK-DREAM 1 - MATT WHITE - 500

Drop In | Kitchen Sink

RAK
CERAMICS



Technical specifications

Dimensions:	1010 x 510 mm
Weight:	30 Kg
Color:	MATT WHITE - 500
Vanity space:	yes
Suites:	Kitchen Sinks

Code	Name
OC200LHSL500A	DREAM KITCHEN SINK 1 - MATT WHITE - 500 - Left Hand Side
OC200NTSL500A	DREAM KITCHEN SINK 1 - MATT WHITE - 500 - No Tap Hole
OC200RHSL500A	DREAM KITCHEN SINK 1 - MATT WHITE - 500 - Right Hand Side

Dimensions: All dimensions in mm. Tolerance of vitreous china & fireclay items: $\pm 5\%$ for below 200mm and $\pm 3\%$ for above 200mm; for all other items tolerance $\pm 1\%$. Note: Due to a continuing development program to improve design and performance, the manufacturer reserves all rights to vary specifications without prior information. Please note accessories are for photographic use only.